

ETRON



**SMART & ENERGY SAVING
LIGHTING SOLUTION**



ETRON, a division of Powertech Products, stands at the forefront of the LED lighting industry in India, renowned for our commitment to excellence, innovation, and sustainability. With a diverse range of high-quality LED lights and fixtures, we illuminate homes, businesses, and public spaces, delivering reliable solutions that align with our customers' needs and environmental goals.

Vision

At ETRON, we envision a future where lighting transcends mere illumination, becoming a catalyst for energy conservation and environmental stewardship. We are dedicated to pioneering green energy solutions that not only reduce CO2 emissions but also provide personalized customer service tailored to each individual's needs. Through active participation in corporate environmental initiatives, we aim to be at the forefront of fostering a greener, more sustainable world for generations to come.

Mission

At ETRON, our mission is clear: to provide top-tier LED products customized to meet our customers' unique needs, all while guaranteeing satisfaction, integrity, and reliability. We hold ourselves to the highest quality standards, ensuring every product is backed by a comprehensive warranty and prompt after-sales service. Moreover, we are deeply committed to playing a significant role in national energy conservation efforts, thereby fostering a more sustainable future for all.



GREEN ENERGY SOLUTIONS

Advantages of ETRON LED



Long Lifespan

ETRON LED lights boast a lifespan exceeding 50,000 hours, ensuring longevity and reliability for years to come.



Lightweight and Easy Installation

Designed for convenience, ETRON LEDs are lightweight and straightforward to install, saving time and effort during setup.



Multi-color Temperature Options

With a range of color temperature options, ETRON LEDs cater to various applications, providing flexibility and customization.



Cost-effectiveness

ETRON LEDs are highly cost-effective, consuming less power compared to traditional lighting solutions, resulting in lower electricity bills and operational expenses.



Eco-friendly

By emitting fewer CO2 emissions, ETRON LEDs contribute to a cleaner environment, making them a sustainable choice for conscientious consumers.



Wide Product Range with Warranty Coverage

ETRON offers a diverse array of LED products backed by comprehensive warranty coverage, ensuring peace of mind for customers.



Pan-India Presence

With a nationwide presence, ETRON provides convenient access to high-quality LED solutions and reliable customer service across India.



Flawless Lighting Solutions

ETRON LEDs deliver flawless and clear lighting, enhancing visibility and ambiance in any environment, be it residential, commercial, or industrial.



Superior Light Emission

Offering superior light emission per watt compared to traditional lamps, ETRON LEDs maximize efficiency without compromising on brightness or quality.



Bespoke Decorative Lighting

Etron Bespoke & Decorative lighting only work with the most trusted materials for your project. Using branded drivers alongside certified, tested and industry recognised LED chips. We guarantee high levels of craftsmanship to ensure long-lasting, eye-catching, brand illuminating products. Our creations will take your displays to the next level. We work with all sectors and corners every industry from commercial to residential to corporate and events.



Customer Portfolio

ETRON takes pride in serving a wide array of clients across various industries, including



RESIDENTIAL
COMPLEXES
HIGHEND
HOMES AND
VILLAS

INDUSTRIAL
WAREHOUSES
AND
FACTORIES



COMMERCIAL
OFFICES AND
BUILDINGS



HEALTHCARE
FACILITIES
SUCH AS
HOSPITALS
AND CLINICS



EDUCATIONAL
INSTITUTIONS



FACADE &
LANDSCAPE
OUTDOOR
LIGHTING



SHOW FLATS
FOR BUILDERS

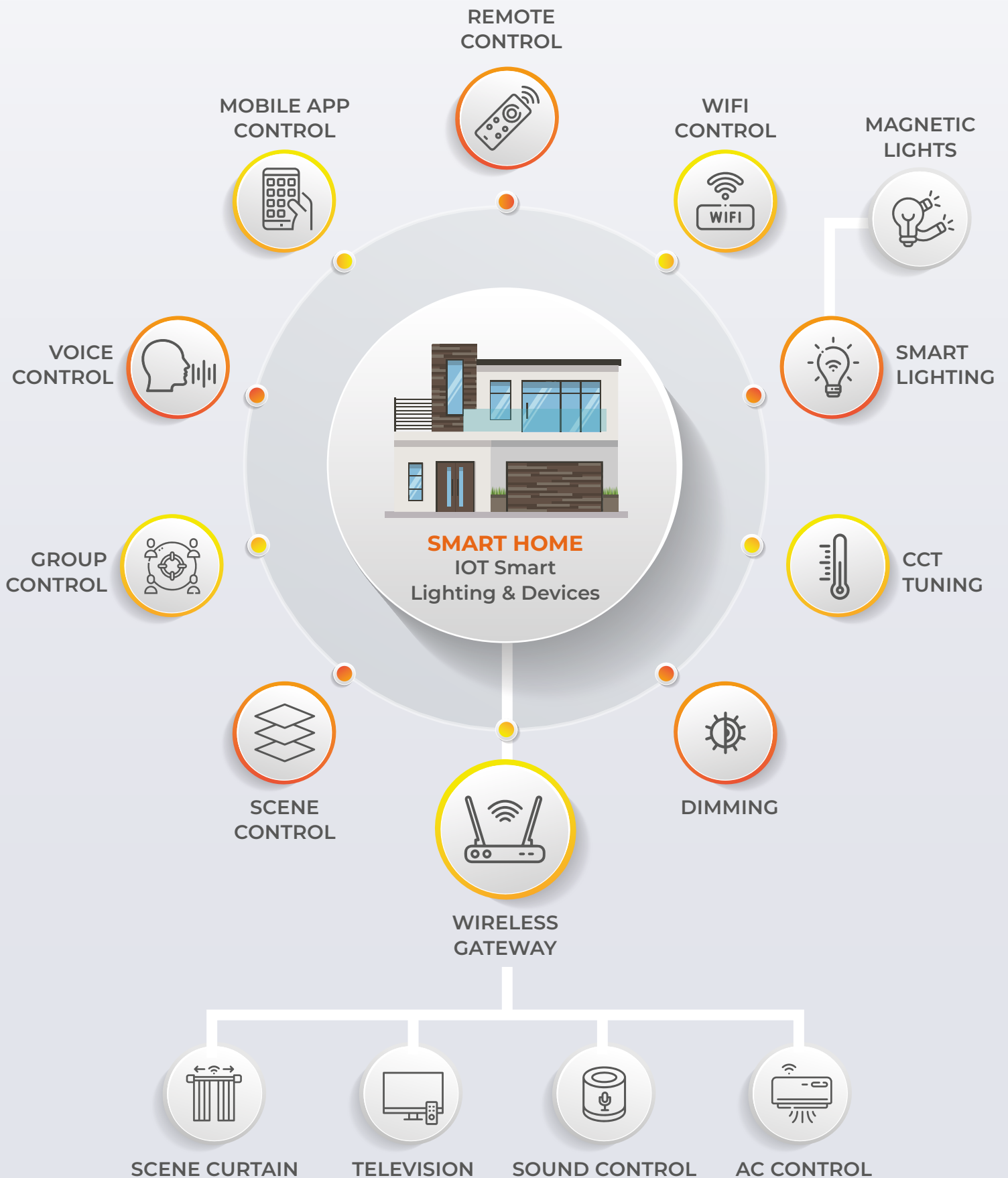


RETAIL
OUTLETS
AND MALLS



INDIAN
RAILWAYS

Wireless Smart Home Automation Ecosystem & Devices



Automation Devices



2.4G RF + WIFI
SMART DRIVERS



STRIP LIGHT CONTROLLER
CCT / RGB



99 CHANNEL
REMOTE CONTROLLER



SMART CURTAIN (MOTOR & RAIL)

Power

40W

Fixture Size

2.2 Mtr

Body Color

White

Curtain Movement

Two Way / Single Way

Remote Operated / App Based Operations /
Alexa Voice Command Support
60Kg Load Bearing DC Motor
Complete Set with Toggle & Hook



WIRELESS WIFI GATEWAY PRO

Our esteemed clients

GRAND | HYATT™



Breach Candy
Hospital Trust

Joyville®
by Shapoorji Pallonji®

Growel's 101

mahindra
LIFESPACES

Your Trusted Brand
g RAJGURU MART
SABSE ACCHA, HAMESHA SASTA

CREDECYS
Data Management Company

Manyavar®

G GARWARE
HI-TECH FILMS

GINGER
An IHCL Brand

INTRA
INDUSTRIES

ORIGA
enabling ideas

TITAN
COMPANY

K RAHEJA
CORP



SOCIAL
DONUT

Raymond

GINGER
An IHCL Brand



P&M MALL
Patna
THE MALL FOR EVERYONE



ETRON

Registered Address

339 / 41 Kalbadevi Road,
Jalan Bhavan 3rd Floor,
Badam Wadi, Mumbai 400002.

Display Centre

G4, Ground Floor, Divya Smruti BLDG,
Opp. Toyota Lakozy Showroom,
Link Road, Malad west, Mumbai 400064.

+91 99203 31424
etronlighting@gmail.com